



July 2015

Volume 2.7

President's Message

I heard a phrase last week that made me stop and think seriously about what it really meant. The three simple word were 'Do Less, Better'. I think it should be applied to the Sandy River Chapter uniformly and soon. The Law of Diminishing Returns says you will get an increasingly smaller incremental return on your applied resource until you reach point where there is no further gain regardless of how many resources you apply. Some of our projects / events are rapidly approaching that point.

In order to do less, some projects / events could be consolidated with similar ones, others may be discontinued and new ones introduced cautiously. The former Chapter Banquet Auction is an excellent example. Banquets had fewer participants, so Banquet was scaled back to Dinner and attendance rebounded, but despite how well it is managed the 'net' revenue remains a constant, so it is at or near the point where increasing the resources, will not increase revenue. That may be acceptable, as we can rely on the constant revenue and we should look for ways to do it better.

Doing thing better requires a grass roots look at the project components; cost, revenue, risk, volunteer labor and the planning effort required. The intangibles need to be considered, as well. If we look at River Clean-up we see it has minimal cost, generates no revenue, has a traffic risk we mitigate with Hy-Vis vests, the number of volunteers can fluctuate greatly

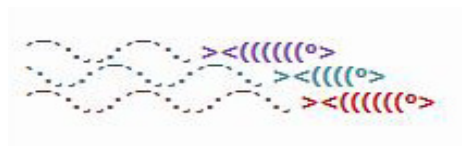
and it takes very little planning. So why do it?

Because of the intangibles; our relationship with the City of Troutdale and the nearly unlimited FREE use of Glenn Otto. Regular fees are \$225 for our Chapter meeting and \$600 for an all day Clinic.

What can we do better on River Clean-up, which is well run already? Some things to consider: Logo H-Vis vests on everyone (Show the brand), Road work signage for safety & branding (Art can probably get them for nothing), Park specific signage (pre- event, during the event, post event), Better publication of the event, Invite the Mayor, the legislators and make it a media event. See, there is room for better.

I challenge the Sandy River Chapter's leadership to look at the existing project / event components and scale back by eliminating some, consolidate others and make future ones replace, rather than increase their numbers. As a result we will, by definition, Do Less, Better. If we don't, we will continue to burn out our volunteers, attendance will decline and our projects will suffer.

Doug Briggs



TIME IS RUNNING OUT

It is that time of the year when we collect YOUR Volunteer Hours. Last year YOUR total hour contributions were over 2900 hours netting a sum of over \$62000 toward keeping the Hatcheries open. YOUR volunteer hour has a dollar value of \$21.36 when reported the ODFW through a grant with the Federal Government receives this stipend.

It is also important on any ODFW directly related projects like the Acclimation Pond, Trees in the Stream, Invasive weed pulls, Fishing Clinics, Clearing Rocks in Buck Creek to mention a few; to keep record of your mileage from Home and back Again. Remember your time starts when you leave home, there and back again. Kind of like the Hobbit. Yes the ODFW can use these miles like the hours they receive another stipend.

So in order for your efforts to truly pay off, I have the opportunity to collect these from YOU either by e-mail... Rjwisherstix@gmail.com or old reliable 503-780-8212 your humble servant Robert Wisher

NW Steelheader Tillamook Fish-Along, Weekend of Sep. 19, 2015

You will want to block out Friday evening through Sunday on your calendar now! Show up Friday evening for dinner and a fishing report and fishing clinic. There will be breakfast Saturday and Sunday morning and a "build your own" lunch bar with lunch meat selections for sandwiches, fruit, a snack, and a beverage. With breakfast in your belly and a lunch bag in your hand, you are ready to head out with your fishing buddies. There will be a BBQ dinner Saturday night followed by tales of the day's exploits and setting up teams for those who want to fish the next day. Sunday morning starts with another hot breakfast and lunch bar. Everyone will need to pack out before leaving for fishing Sunday morning. (The dorm will be cleaned and locked up when everyone leaves. The gate will be left unlocked until late afternoon for the RVs.)

The Tillamook Fairground Dorm is an ideal location for this event. It is located between the most popular Tillamook Bay boat ramps and is between the Wilson and Trask Rivers. There are also bank fishing opportunities just as close. There is water and 30 amp electrical service for RVs and plenty of parking for boats and other vehicles. It is just south of Highway 6 on Third Street, just off the Wilson River Loop Road. (Turn south off Highway 6 at the yellow flashing light. This road dead ends into the Fairgrounds)

Further details and a signup will be coming your way at the next chapter meetings and newsletters. Contact Norm Ritchie with any questions or

suggestions. 503-807-7729 neritchie1@gmail.com.

Norman E. Ritchie, P.E.
Development Director
Association of Northwest Steelhead-
ers



Sandy Chapter Annual Family Picnic Saturday, July 25th at Glen Otto Park, Troutdale.

Everyone can expect a great time with a barbecue and plenty of relaxation and fellowship with good friends and family. There will be bingo, door prizes, and Larry Palmer will conduct a short "how to rig it" clinic at the event for the new members. (Bring three one dollar bills for the bingo games. Winners take all!)

It's a new Location but a location we all know well. We have Site A which is strait down the trail from the Sandy Chapter meeting hall. We will be providing the traditional salmon, burgers, and hot dogs, but what made the meal a real success last year was the pot luck for side

dishes, salads, and deserts. The chapter has some members with real talent in the kitchen! Of course we also provide various sodas, water, and coffee.

People should arrive starting about 11:00 am, but be sure to be there before we start serving from the barbecue which starts at noon.

We need an accurate headcount to know how much food to purchase, so if you were not able to sign up at the chapter meeting, please call before Monday, July 20th. Each RSVP received will be entered into a drawing for a rod & reel combo donated by Larry Palmer, so sign up at the meeting or respond to the newsletter now!

To sign up or if you have any questions or suggestions call Joli Ritchie at 503-970-5620 or email neritchie1@gmail.com. We will want to know your preference of salmon, hamburger, or hot dog and what you intend to bring as a pot luck item.





ROCK & ROLL AT BUCK CREEK

On 7-11 we will meet at Glenn Otto Parking lot carpool to Buck Creek which is approximately 8 miles up river and less then a half mile from Gordan Creek. We will remove small rocks out of the path of spawning Salmon that have a calling to pass through a large culvert to the other side of Gordan Creek Road. Over time rocks have washed down and filled in several pools leading up to the culvert. Through our efforts the Salmon will be able to continue up through the culvert to meet their destiny. After passing rocks I felt we all could, if you like, meet Art Israelson for a Bar-B-Que at either

Dabney or Glenn Otto Parks. Yes you are welcome to bring a friend. Please R.S.V.P. rjwisherstix@gmail.com or 503-780-8212 Robert Wisner Step Director



Newsletter Deadlines

August 19

September 16

October 21

November 18

Rules for Chapter Newsletter

Dates for the chapter newsletters deadlines will be published in each issue of the newsletter. a four month span of dates will be featured.

Deadline is 6 pm Wednesday following the chapter board meeting. Don't expect that being late will be OK. Being late means your piece won't be in the newsletter.

All submissions will be in digital format. Handwritten or typed submissions will not be accepted.

Submissions will be sent as an attachment, titled appropriate to content, date part of title. Exmple- "August 8 Clinic piece 6/7/15."

Please add, "This is for the newsletter" as the subject or as the pre-title when sending an email.

Computer program language will be MS Word. IF you have a Mac, buy word for it, or create the file on a computer that does.

Submissions will be ready for insertion and spell checked.

Photo format will be jpeg or pdf. Please include captions for all photos.

Submissions on a flash drive will be accepted at the chapter board meeting. Flash drives will be returned to you at the next general meeting.

Directors and officers reports should be of a similar size from month to month. Space will be reserved in the newsletter for it. Sending in a report that is 2-3 times as large as last time just complicates the layout process and basically cuts into the space reserved for others.



Chapter Board Members

President

Steve Rothenbucher
(503) 257-0039
rothenbuchers@gmail.com

Senior Vice President

Robert Wisher
(503) 780-8212
rjwisherstix@gmail.com

Vice President

Don Voeks
(503) 661-1816
donvoeks@gmail.com

Secretary

Lee Van Speybrock
(503) 679-0792
squawfishslayer@yahoo.com

Treasurer

John Hydorn
(503) 255-0600
johnhydorn@gmail.com

Membership Meetings

When:

First Wednesday of the month
7:00 P.M. Sharp

***No meetings in
July and August***

Where

Sam Cox Building,
Glenn Otto Park
1102 E Columbia River Highway
Troutdale, OR

Sandy River Chapter

NW Steelheaders
PO Box 301114
Portland, OR 97294-9114

<http://www.sandysteelheaders.org/>



Committee Heads

Special Events

Jeff Stoeger
(503) 704-7920
mjstoeger@msn.com

Stream Projects

Robert Wisher
(503) 780-8212
rjwisherstix@gmail.com

Website, Content

John Hydorn
(503) 255-0600
johnhydorn@gmail.com

Website, Design

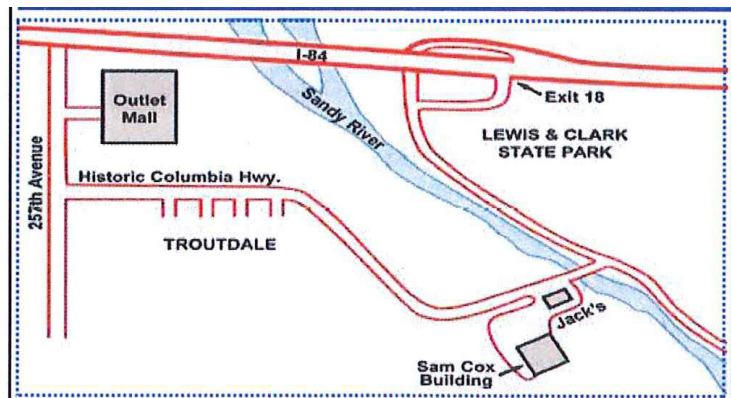
Kerin Laurence
(503) 643-3168
kerindimeler@comcast.net

Website Development

Victor Laurence
(503) 998-3365
victor@victorlaurence.com



At Our Meetings



Chapter Directors

Auctions

Leslie Hinea
(503) 653-4176
officemanager@anws.com

Fish Tanks

Mike Myrick
(503) 281-6438
mcmifishandivote@msn.com

Membership

Frank Cantino
909-322-4606

Newsletter Editor

John Bennett
(503) 341-8728
primertee@gmail.com

Newsletter Publisher

Larry McClintock
(503) 257-0553
lwmclintock@comcast.net

River Clean Up

Russ Sumida
(503) 665-3953
ras8529@frontier.com

Sales

Brad Halverson
(503) 201-6052
orcabrad@comcast.net

Special Projects

Larry Palmer
(503) 286-2093
palmerlarryd@yahoo.com

**Our Members are our greatest asset to the Chapter.
We welcome visitors to join the Sandy River Chapter,
Association of Northwest Steelheaders.**



MAY

6 Chapter Meeting
dinner/ auction
9 Fishing Clinic
Contact Larry Palmer
503-286-2093
13 Board Meeting
16 Sandy River Clean-up

JUNE

3 Chapter Meeting
6 Chinook Spring Classic
10 Board Meeting

JULY

No Chapter Meeting
8 Board Meeting
25 Chapter Picnic

AUGUST

No Chapter Meeting
12 Board Meeting



Someone recently said they could not find our "Calendar" on our website. Well, we have one. It is called "Events" and it does not look like the graphic grid that you commonly see. When you click on the Events tab, you are presented with a choice of "Current", "Upcoming" and "Archive". The Current Events are a small list of those in the immediate future. The Upcoming Events include everything in the Current Events plus everything that has been posted as future events. The Archive Events are the events that have already passed. Note you will also find the Current Events displayed in the middle of the first page that gets displayed on our website, the Home page.

Give it a try and go look at our calendar by entering <http://www.sandysteelheaders.org/> in your favorite browser.

Do you have questions about our website? Email me at JohnHydorn@gmail.com and I will answer your question in future newsletter.

John Hydorn

O2BFISHN GUIDE SERVICE

Jeff Stoeger

503-704-7920

Salmon - Steelhead

Pro Staff for:

St Croix Rods, Okuma Rods & Reels, Owner Hooks, Yakima Bait, Pro-cure Bait Scents, P-Line, TUFLine.

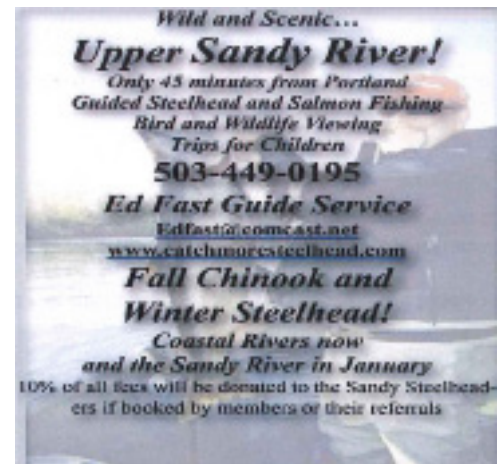
CPR & First Aid Certified

Licensed & Insured



www.guideoregon.com

*Don't forget to
continue turning
in your volunteer
hours!!*



Custom Tied Schlappen Jigs on strong Owner hooks

Complete Fly -to Kits

Floats, Tackle and More

(503)998-3994

Mark Anderson

SPINNER DAVE'S

CUSTOM DESIGNS

PREMIUM SPINNERS AND COMPONENTS

EXCLUSIVE HOME OF THE "SG" SERIES BLADES AND SPINNERS





Spinner Dave can also be contacted at sdcustomdesigns.com

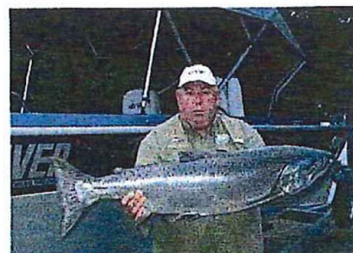


Trevor Storlie / Professional Guide

Phone 503.695.6515 / 503.307.5601 cell

37000 SE Gordon Creek Road, Corbett, OR 97019

www.redsguideservice.com / email: trevor@redsguideservice.com



Dean's Guide Service

Dean Pierce

503.333.4575

Salmon- Steelhead
Sturgeon- Walleye

US Coast Guard
Licensed & Insured

www.deansguideservice.com

YOU are
what
makes an
event
successful

Thank
You

Grazie

Gracias

Merci

Danke

Arigatō

Please do not forget to turn in your volunteer hours. It is important that these hours are recorded.

You can turn in the volunteer hours form at the monthly meeting to Robert Wisher or by e-mail: rjwisherstix@gmail.com

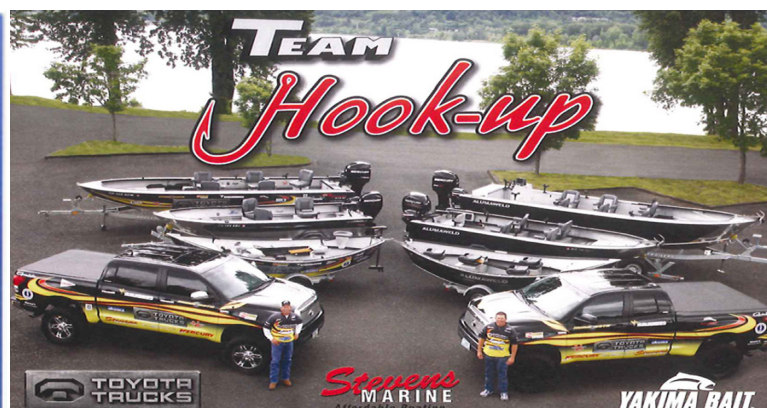
Sandy River Chapter Volunteer Hour Report				Name:			
Event:		Date:		Hours:			
Event:		Date:		Hours:			
Event:		Date:		Hours:			

Remember to include your travel time to and from the event. If you have any questions about your how to report your hours, contact the event coordinator. Turn this form in at the monthly meeting or by e-mail to Robert Wisher (rjwisherstix@gmail.com).

Sandy River Chapter Logo Apparel

Shirts (men & ladies), hats, sweatshirts, blankets, fleece and accessories

www.stancellgraphics.com/sandyriverchapter
or Call Brad Halverson (503) 201-6052



Framing the Hatchery Debate
By,
Brad Halverson, Co-Resource
Director Association of NW
Steelheaders.

June 2015

The Native Fish Society recently hosted a presentation in Portland titled: “The High Cost of Hatcheries.” For those of you unfamiliar with NFS, they are the entity that unsuccessfully tried through litigation to shut down the Sandy River Hatchery operations.

In its mission statement, NFS asserts that it is a conservation non-profit headquartered in Oregon City, advocating for the protection and recovery of wild fish in the Northwest, by relying on the “best available science to promote public policy...”

The speaker, Dillon Tomei from Washington State proclaimed that NFS monitored the Four H’s impacting healthy fish runs (Harvest, Hydro systems, Habitat and Hatcheries) with equal fervor; but, his speech refuted that assertion categorically. In his own words, “Genetic pollution from hatchery stock spawning with wild stock is the primary cause of the decline of wild fish on the West Coast.”

Their conclusion is derived strictly from cause and effect: more hatchery plants = lower trends in wild fish. Just eliminate all hatchery fish, and wild fish will repopulate to their historic levels. This logical fallacy has a name: “Post Hoc Ergo Propter Hoc” and in Latin means “after this therefore because of this.” It’s a tempting error because chronological sequence looks to be integral to causality. The rooster crowed immediately prior to sunrise, therefore the

crow caused the sun to rise. Tomei even blamed the higher incidence of avian and pinniped predation on hatcheries creating a higher bio mass of smolts and fish coursing through our rivers and estuaries. Dams, and manmade islands for nesting, apparently play an insignificant role in predation.

Tomei referenced the Toutle, Eel, Skagit and even the Molalla rivers as proofs that the removal of hatchery stock automatically rebuilds wild runs. And, while he supported his conclusions with what seemed to be peer reviewed empirical studies, subsequent research by this writer with those more familiar with the Molalla seemed to dispute those findings unconditionally. The wild steelhead have not rebounded since hatchery plants were eliminated there.

Other proofs presented were the Skeena River in British Columbia, which “has a \$100,000,000 salmon fishing economy and no hatcheries,” and the state of Montana, which eliminated trout hatcheries in 1974, and “now is the pre-eminent trout fishing jewel in the country.” But, we should ask: What else is missing from those locales? People? Hydro projects? Habitat degradation? Or is it solely because there are no hatcheries present in these environs?

When asked to comment on the well-known basins of the Nisqually and Nehalem rivers where the improvement in wild runs upon the elimination of hatchery stocks has been conspicuously nonexistent, his answer was to blame hatcheries even for this dismal outcome, postulating that the introgression of hatchery stock was so egregious in these watersheds that it will take longer to rebuild their wild populations. The NFS argument focuses on

natural selection within the hatchery life cycle, and later in the rivers as the reason hatchery stock are bad for wild stock. Aggressive, fearless behavior in the hatchery is rewarded with more food; yet those very characteristics in the wild lead to a higher incidence of death by predation. I don’t believe this is disputed by anyone, but rather than leading to the closure of hatcheries, it should more reasonably lead to hatchery practice reforms.

For those of you unfamiliar with, or unwilling to acknowledge, the negative impacts of hatchery stock on wild stock, let me summarize them here and remind you that few on either side of this debate dispute their importance: (1.) Genetic, commonly described as reproductive success or productivity; (2.) Ecological, also referred to as competition for food and shelter in the wild, as well as increased occurrences of predation by providing greater food sources for predators; and, (3.) Facility, the hatchery plant itself can degrade water quality, and cause fish passage impediments in the drainage. But, once again, this understanding could and is leading to hatchery practice reforms rather than termination.

And to this list, NFS adds a fourth cost: Economic. They refer to the \$2B spent annually to restore Columbia River endangered species as costing each of us higher electricity rates (due to the practice of spill and flow management) and higher taxes. What Tomei failed to share with the audience, though, is the not insignificant economic cost to us taxpayers for their recent lawsuit on the Sandy River. While the defendants (ODFW and NOAA) prevailed in this litigation, if the plaintiffs succeed in their recent request, both sides’ attorney costs will be paid by

you and I as taxpayers. Talk about cost. It should be noted here that the Association of NW Steelheaders, and the Sandy River Chapter raised funds to help defray these defendant costs, and continue to support an ongoing legal action fund for potential future lawsuits.

The debate from those of us sports and commercial anglers who desire to consume salmon and steelhead is framed differently from that of the NFS. If wild stocks had historically repopulated themselves to a level of sustainability, there would have been no reason for hatcheries in the first place. But mans' footprint in their environment has grown exponentially over time, and seems unlikely to abate in the future. We build dams, we destroy habitat and we harvest unsustainably.

It is noteworthy that the Grand Coulee and Bonneville Dams were constructed on the Columbia between 1933 and 1942, and the Pittman-Robertson Act was passed by the federal government in part to mitigate the impacts to wild fish in 1937. Talk about cause and effect. This act provides funds for hatchery production (as well as funds to benefit wildlife) on the Columbia by imposing an excise tax on sporting goods, arms and ammunition. The point here is that hatcheries were funded after the hydro projects revealed their impairment to wild fish sustainability.

Finally, and we should recognize this: NFS feels the conversation with the fishing community is over. Their success in the future will come "from soccer moms and dads sensitive to conservation."

The sports angling advocacy community, however, is profoundly engaged in this debate, and will

continue to inform all stakeholders and audiences of the ongoing importance of hatcheries to viable harvest opportunities as well as the sustainability of our valued NW wild runs of salmon and steelhead.



NW Steelheader Tillamook Fish-Along, Weekend of Sep. 19, 2015

Show up Friday evening for dinner and a fishing report and fishing clinic. There will be breakfast Saturday and Sunday morning and a "build your own" lunch bar with lunch meat selections for sandwiches, fruit, a snack, and a beverage. With breakfast in your belly and a lunch bag in your hand, you are ready to head out with your fishing buddies. There will be a BBQ dinner Saturday night followed by tales of the day's exploits and setting up teams for those who want to fish the next day. Big fish prizes will be awarded. Sunday morning starts with another hot breakfast and lunch bar. All this for just \$80! (See fee details below.) Everyone will need to pack out before leaving for fishing Sunday morning. (The dorm will be cleaned and locked up when everyone leaves. The gate will be left unlocked until late afternoon for the RVs.)

Boat captains are able to pick their own passengers, but we will help coordinate other boaters and riders to balance local knowledge and expertise to insure this is a learning experience for everyone who needs it as well as being a great weekend of fishing. This will be done well in advance to allow participants to coordinate their fishing. Riders are expected to cover boat fuel, launch fees, and bait (which are only a portion of the boat owner's

cost).

There may be fresh dungenous crab for Dinner – assuming we can catch some on Friday, prior to the event. Interested in doing some crabbing? One boat with three crabbers can get a limit of 36 crabs which would provide everyone with half a crab appetizer for the dinner. Let us know if you are interested, particularly if you have a boat and some traps.

Feeling Lucky? We will have prizes (of minimal value) for big fish. Prizes go to the anglers with the largest fish by weight after being gutted and gilled. (This allows anglers to take good care of their catch for optimum food quality.) Ties will go to the longest fish. Entries must be at the Tillamook Fairground Dorm weigh-in no later than 5:00pm.

Location

The Tillamook Fairground Dorm is an ideal location for this event. It is located between the most popular Tillamook Bay boat ramps and is between the Wilson and Trask Rivers. There are also bank fishing opportunities just as close. There is water and 30 amp electrical service for RVs and plenty of parking for boats and other vehicles.

The dorm has a large kitchen and dining/meeting room on the main floor and two bunk rooms with bathroom & showers up stairs. Bring your sleeping bag, towel, and other shower supplies. A hot shower really feels good after a day on the bay! (Ear plugs can be helpful if there are attendees that snore.)

Cost – Fees are due no later than Friday, Sep. 11, 2015:

(This is not a fund raiser. These fees just cover all the costs.)

- Per individual staying at the dorm: \$80 (no reduction for staying only one of the two nights – we still need to make accommodations)
- Per additional family members staying at the dorm: \$70

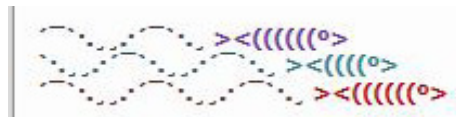


Education Director Mike Myrick and Development Director Norm Ritchie with typical Tillamook Bay Fall Chinook.

- Per individual or family member not staying at the dorm but participating in evening meals and activities: \$30 (does not include breakfast or lunch)
- Not staying at dorm but participating in all meals: \$50
- There are a limited number of RV sites with 20 amp electrical (no water or dump). RV spots are an additional \$10 per night
- Don't forget the tournament entry fee!

Contact Norm Ritchie (503) 807-7729 to sign up or for additional details. Or email neritchie1@gmail.com with the following information: name; phone number; will you be staying at the dorm, bringing an RV or staying elsewhere?; Will you be fishing the bank or do you want a ride on someone else's boat or will you be bringing a boat ; If you are bringing a boat, how many people can you take on your boat and do you have anyone already set up to go on your boat (must be a NW Steelheaders member); What is your knowledge of Tillamook fall chinook fishing?

Payment must be received no later than September 24th in order for us to know how much food to purchase. Please make checks out to the "Sandy River Chapter, ANWS" and mail to Norm Ritchie, 2834 SE 166th Ave., Portland, OR 97236-1861.



INVASIVE WEED PULL AUGUST 15 WATCH THIS SPACE IN THE AUGUST NEWSLETTER

August 8th clinic

Saturday, August 8th we will do another in our very popular series of clinics in concert with ODFW.

I am currently recruiting the volunteers who will make this clinic another winner and need YOUR help, whether in simply setting up the room, or presenting on a method.

Subjects I'd like to cover in this clinic are-

- Bobber-jig-fishing/equipment
- Plunking/equipment
- Basic Knot Tying
- Spinner and spoon fishing/equipment
- Drift fishing/equipment
- Trolling with herring and spinners/equipment
- Plug fishing/equipment
- Anchor fishing/equipment
- Smoking fish- filleting and brining
- Maps- where to go with various techniques, bank access, etc.

Location is- Sam Cox Building, Glenn Otto Park

Time is- 8 AM for general clinic setup

Clinic starts at 9 AM runs until 4 PM

Volunteers for this event will receive a waiver of the \$52 fee that students pay, and be entered into a free drawing for a fishing trip with Larry Palmer

Contact Larry Palmer to volunteer palmerlarryd@yahoo.com 503-286-2093